

INTERFACE BOARD (P318)

Ref. No.	Part No.	Description
RESISTORS		
R201	340X3910-934	91 Ohm $\pm 5\%$, 1/2W Carbon
R202	340X2223-934	22k Ohm $\pm 10\%$, 1/4W Carbon
R203	340X3102-934	1k Ohm $\pm 5\%$, 1/2W Carbon
R204	340X2101-934	100 Ohm $\pm 5\%$, 1/4W Carbon
R205	340X2104-934	100k Ohm $\pm 5\%$, 1/4W Carbon
R206	340X3331-944	330 Ohm $\pm 10\%$, 1/2W Carbon
R207	340X2222-934	2.2k Ohm $\pm 5\%$, 1/4W Carbon
R208	340X2222-934	2.2k Ohm $\pm 5\%$, 1/4W Carbon
R209	340X2104-934	100k Ohm $\pm 5\%$, 1/4W Carbon
R210	340X2101-934	100 Ohm $\pm 5\%$, 1/4W Carbon
R211	340X2201-934	200 Ohm $\pm 5\%$, 1/4W Carbon
R212	340X2201-934	200 Ohm $\pm 5\%$, 1/4W Carbon
R213	340X2201-934	200 Ohm $\pm 5\%$, 1/4W Carbon
R214	340X2201-934	200 Ohm $\pm 5\%$, 1/4W Carbon
R215	340X2201-934	200 Ohm $\pm 5\%$, 1/4W Carbon
R216	340X2201-934	200 Ohm $\pm 5\%$, 1/4W Carbon
R217	340X2101-934	100 Ohm $\pm 5\%$, 1/4W Carbon
R218	340X3102-934	1k Ohm $\pm 5\%$, 1/2W Carbon
R219	340X3102-934	1k Ohm $\pm 5\%$, 1/2W Carbon
R220	340X3102-934	1k Ohm, 5%, 1/2W Carbon
R221	340X3471-934	200 Ohm, 5%, 1/2W Carbon
R222	340X2201-934	200 Ohm, 5%, 1/2W Carbon
R223	340X2104-934	100k Ohm, 5%, 1/4W Carbon
R224	340X3681-934	680k Ohm, 5%, 1/2W Carbon
R225	340X2822-934	8.2k Ohm, 5%, 1/4W Carbon
R226	340X2822-934	8.2k Ohm, 5%, 1/4W Carbon
R227	340X2822-934	8.2k Ohm, 5%, 1/4W Carbon
R228	340X3391-934	390 Ohm, 5%, 1/2W Carbon
VR201	40X0641-005	1.5k Ohm Black Level Control
VR202	40X0641-006	10k Ohm Horizontal Centering

Ref. No.	Part No.	Description
CAPACITORS		
C201	45X0524-038	1000 uF, 16V Electrolytic
C202	45X0524-053	470 uF, 16V Lytic
C203	349X2232-109	.022 uF, 10%, 100V
C204	80X0099-020	680 pF, 10%, Z5F
C205	349X1032-109	.01 uF, 10%, 100V
SEMICONDUCTORS		
TR201	86X0113-001	Transistor (NPN) 2N3904
TR202	86X0113-001	Transistor (NPN) 2N3904
TR203	86X0113-001	Transistor (NPN) 2N3904
TR204	86X0066-001	Transistor (PNP) MPS-A70
TR205	86X0066-001	Transistor (PNP) MPS-A70
TR206	86X0066-001	Transistor (PNP) MPS-A70
TR207	86X0113-001	Transistor (NPN) 2N3904
TR208	86X0113-001	Transistor (NPN) 2N3904
TR209	86X0113-001	Transistor (NPN) 2N3904
TR210	86X0113-001	Transistor (NPN) 2N3904
X201	66X0046-001	Diode Silicon FDH-444
X202	66X0046-001	Diode Silicon FDH-444
X203	66X0046-001	Diode Silicon FDH-444
X204	66X0046-001	Diode Silicon FDH-444
ZD201	66X0040-019	Diode, Zener 3.9V, 5%, 0.5W IN5228B
MISCELLANEOUS		
J201	204X9300-958	Socket, 6 Pin
J202	204X9300-958	Socket, 6 Pin
P203	204X9600-845	Plug, 4 Pin
P204	6A393-003	Plug, 3 Pin
P205	6A0393-006	Plug, 6 Pin

REAR CHASSIS CONTROLS

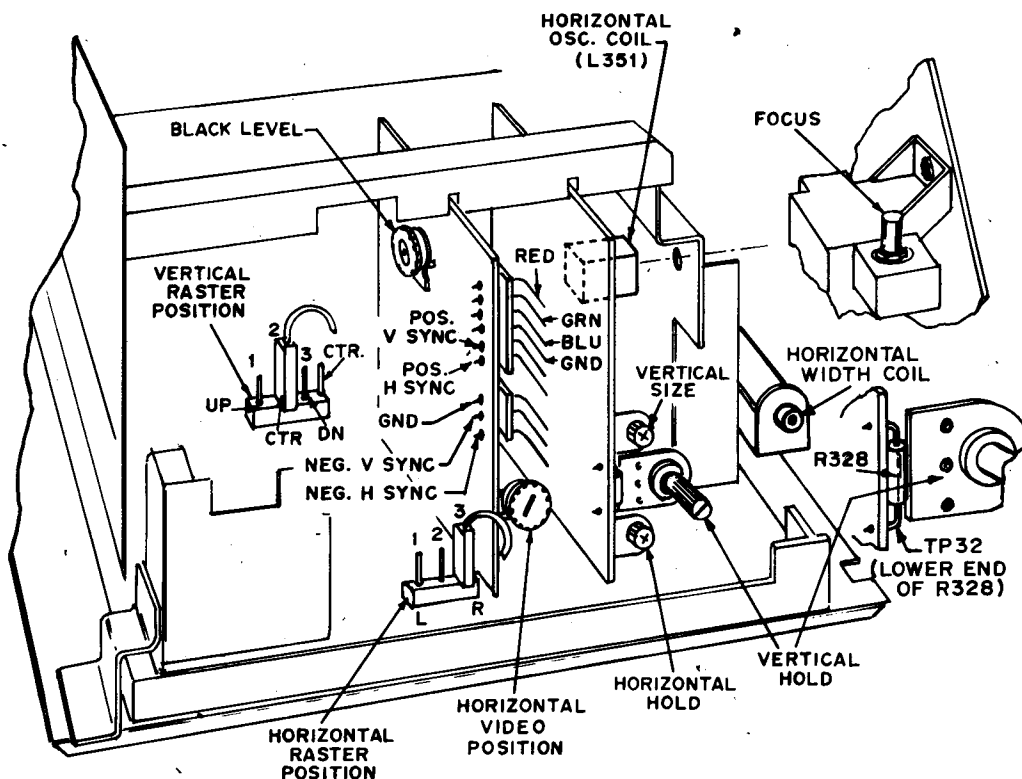


FIGURE 17